

BENDONI INOX S.r.l.
I-52010 Bibbiena (Arezzo)
Fraz. Soci - Via S. Marco, 9
Tel.: +39.0575.560.231
Fax: +39.0575.561.362

www.bendoni.it
Mail: info@bendoni.it
CCIAA 75927
P.iva - C.fis. - R.imp.
IT-00878970516

Bendoni **inox**

BASIC S/S SHELVING 4 SMOOTH SHELVES



Article code:

270K1254

Dimension:

mm. 1380x600x1816h

Features:

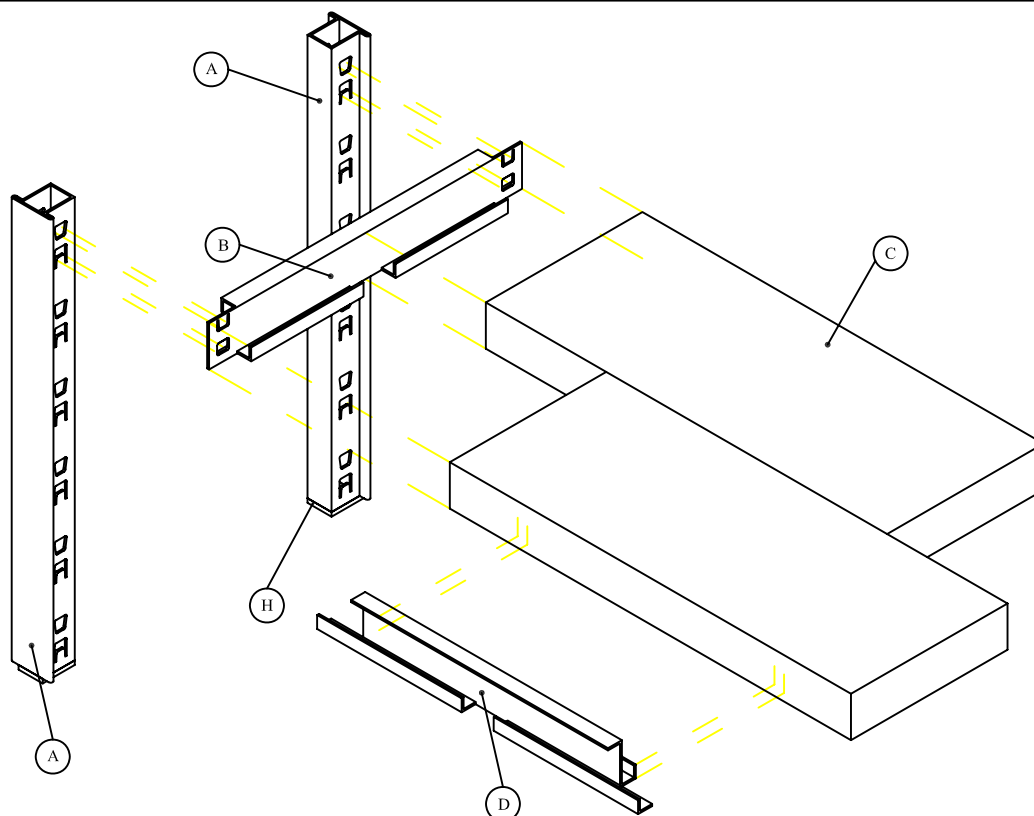
Made entirely of S/S AISI 304 - The sides are folded profiles in pitch slotting mm. 86 with rubber bottom and top cap - The shelves consist of 3 elements of 200 - The mounting system of the cross members and shelves is by joint - The stiffening back and on sides are secured with screws

Date 07/08/2006

File name Scaffalatura componibile_EN

Version A06-1

Modular shelving - Cross members and shelves



1) Place the uprights (A) in pairs, in a vertical position, making sure the black rubber (H) is on the floor, or that the slots of the uprights are as shown in the design.

Fit the normal crosspieces (B) in the relevant slots, making sure both tongues (the one on the upright and the one on the crosspiece) fit together. The position of the crosspieces establishes the distance between the shelves, so make sure you put them in the right position, although you can move them later.

Only fit the crosspieces on one of the sides to create the side crosspieces, then fit them on the two faces to create the central ones.

2) Keeping the sides in a vertical position, with the faces on which the opposing crosspieces are applied, start fitting modular shelves (C), fitting the bottom fold of the head of the same into the relevant slot of the crosspiece. >Depending on the depth, the crosspieces may have one or more intermediate slots to take each single shelf module. The crosspieces that are just one shelf deep (200 - 250 - 300 mm) have no intermediate slots.

To make the assembly of the shelving easier, first insert two shelves in each space, positioning them at the top and bottom to create a "skeleton" for the rest of the shelving, and then inset all the other shelves. The grills are assembled in the same way, with the only difference being that the required depth is obtained with just one element.

3) If the shelving is mounted at a right angle and you want to avoid using a double side, you can fix the shelves of the other side of the right angle directly to those of the linear element.

To do this you will have to use a particular type of crosspiece (D) called an "angular" crosspiece, which is assembled on the shelves (already mounted) of the linear element you are using, instead of on the uprights.

To assemble these, swap the bottom and the top of the crosspiece by turning it upside-down so it can hold the front profile of the shelf, then it must be positioned up against the upright (on the left in the case shown in the diagram). The shelf fits into the angular crosspieces in the same way as the normal ones.

Date 07/08/2006

File name Scaffalatura componibile_EN

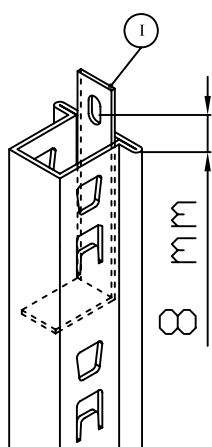
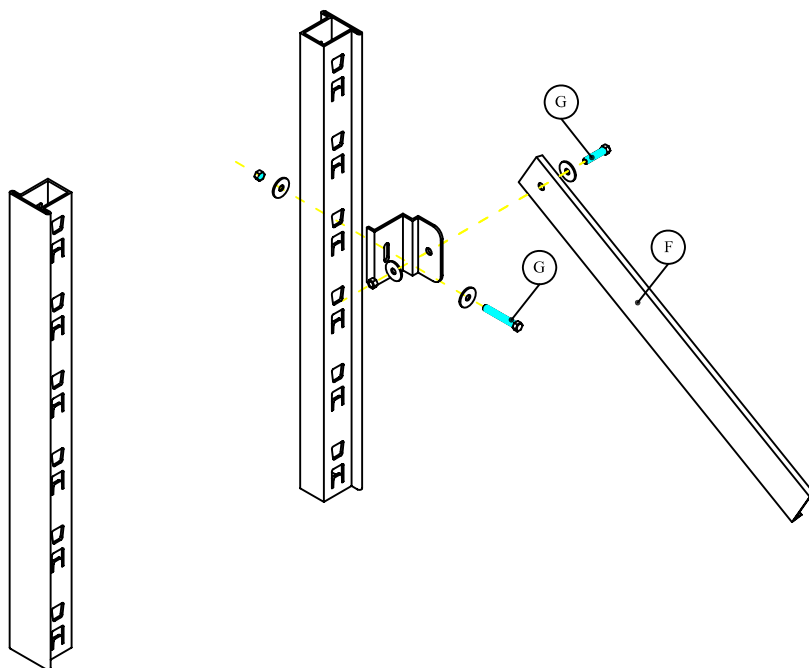
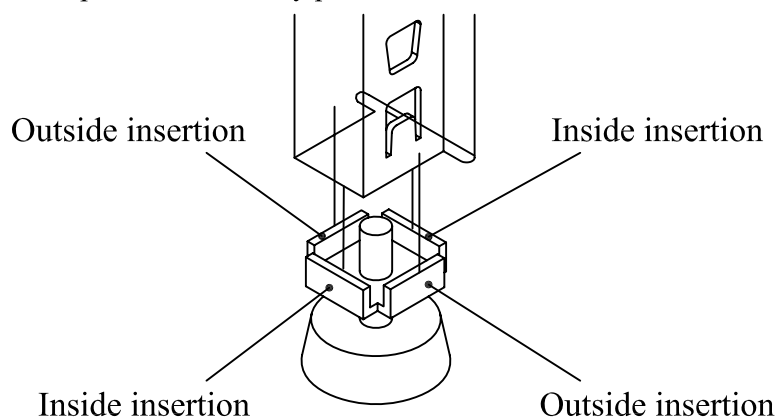
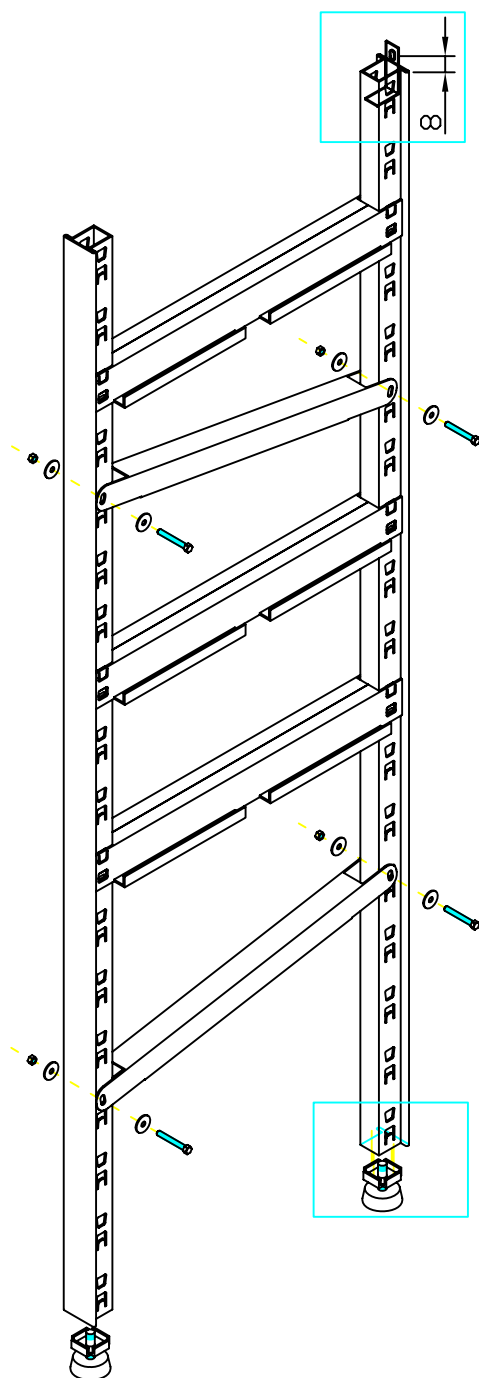
Version A06-1

Modular shelving - Foot, reinforcement and bracket

The lateral reinforcements must be applied at sides like showed in figure (with contrary inclinations) fixing with supplied screw.

Fastening must be made on trapezoidal holes making care to verify the aplomb of sides before tighten the screws.

The adjustable foot must be inserted like showed in figure, taking care to remove before the fix plastic foot already present.



The rear reinforcement [F] strengthen the shelving. This is assembled after all the other phases, after you have made sure the shelving is in the right position.

The rear cross member has two lateral "tangs" [I] which are fixed with the (short) hex-head bolts M6 [G] supplied, but without tightening the nut! After having fitted the "tangs", turn them to adapt them to the profile of the upright, positioning the cross member in a roughly central position with respect to the height of the shelving so the holes of the tangs line up with the slots of the two uprights you want to connect. After checking the shelving is "plumb", tighten all the bolts [G]

The rear bracket [I] is used to fix the upright to the wall. Insert the bracket in the top of upright (like showed in the side figure) and fix it to wall using supplied screws.