

Family
COOKING EQUIPMENT STAR 70

Section
GAS AND ELECTRIC PASTA COOKERS

Model
NPC78GM

Code
CR1206910

28+28 LITRE TWO WELL GAS PASTA COOKER

Gas pasta cooker with two wells constructed in AISI 304 stainless steel. 1,5 mm thick pressed top with spillage recess and extended expansion zone. Deep drawn wells in AISI 316 polished stainless steel with radiused bottom for ease of cleaning. Water loading by tap placed on the control panel. Fixed water tap in stainless steel located below draining board. Safety guaranteed by a pressure switch, which prevents heating if well is empty. Heating by means of steel burner with stabilized flame complete with pilot flame and safety thermocouple. Gas supply controlled by safety tap with thermocouple. Automatic piezoelectric ignition. 28+28-litre well capacity. Well dimensions mm 310x340x275h. Drain tap on bottom of well, accessible from front door. Height adjustable feet in stainless steel.



Technical data

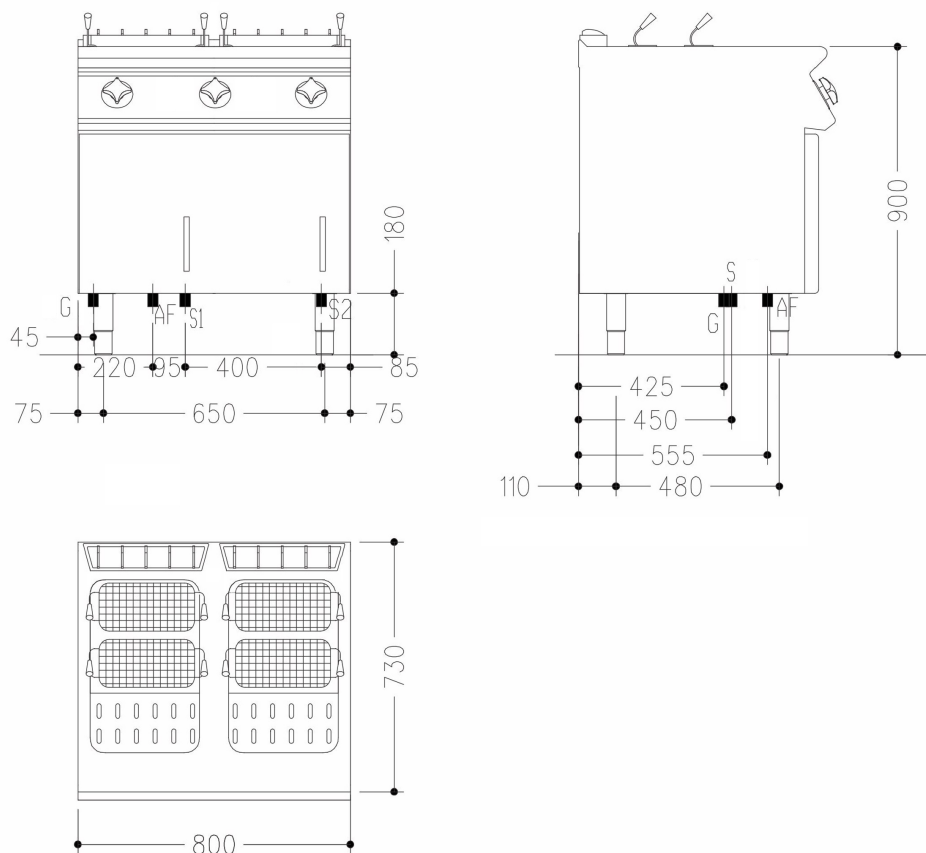
Width mm:	800	Internal dim. oven mm:	
Depth mm:	730	Oven capacity:	
Height mm:	870	Oven power kW:	
Weight kg.:	83.00	Qty heating zones:	2 x 10,5 kW
Volume m ³ :	0.80	Plate dim. mm:	
Power supply:		Dim. heating zone mm:	
Gas power kW:	21.00	Qty tank:	2
Electric power kW:		Tank dim. mm:	310x340x275h
		Tank capacity l:	28 + 28

Family
COOKING EQUIPMENT STAR 70

Section
GAS AND ELECTRIC PASTA COOKERS

Model
NPC78GM
Code
CR1206910

28+28 LITRE TWO WELL GAS PASTA COOKER



Legend

(E) Socket 1:

(E) Socket 2:

(G) Gas: Ø1/2"- H=200mm

(AD) Softened water:

(AF) Cold water: Ø1/2"-H=100mm.

(AC) Hot water:

(S) Draining: Ø1"-H=200mm

(FR) In e out freon:

(V) Steam: