

Family
COOKING EQUIPMENT STAR 70

Section
MAXI OVEN

Model
NC7FGM12G

Code
CR0598160

6-BURNER GAS RANGE WITH GAS MAXI OVEN

Gas hob constructed from AISI 304 stainless steel. 15/10 pressed top, designed for flush alignment. Appliance comprises 6 sealed burners with maximum output of 6 kW output. Safety tap with thermocouple for continuous output control from 1.6 to 6 kW. Main burner ignition by means of permanent, low-energy pilot burner (170 W). Pilot burner and thermocouple are located underneath the main burner body, protected from accidental impact and any spills. Hob features radiused corners for ease of cleaning and pan supports in RAAF enamelled cast-iron (acid, alkali and flame resistant). Gas oven with thermostatic control valve for temperature adjustment from 100°C to 330°C. Burner with stabilized flame complete with pilot flame, safety thermocouple and piezoelectric ignition. Cooking chamber dimensions, 975x641x390h mm. Maxi oven power: 10 kW. Appliance equipped with height adjustable feet in stainless steel.



Technical data

Width mm:	1200	Internal dim. oven mm:	975x641x390h
Depth mm:	730	Oven capacity:	3 x 930x620
Height mm:	900	Oven power kW:	10 kW
Weight kg.:	180.00	Qty heating zones:	6 x 6 kW
Volume m ³ :	1.20	Plate dim. mm:	
Power supply:		Dim. heating zone mm:	
Gas power kW:	46.00	Qty tank:	
Electric power kW:		Tank dim. mm:	
		Tank capacity l:	

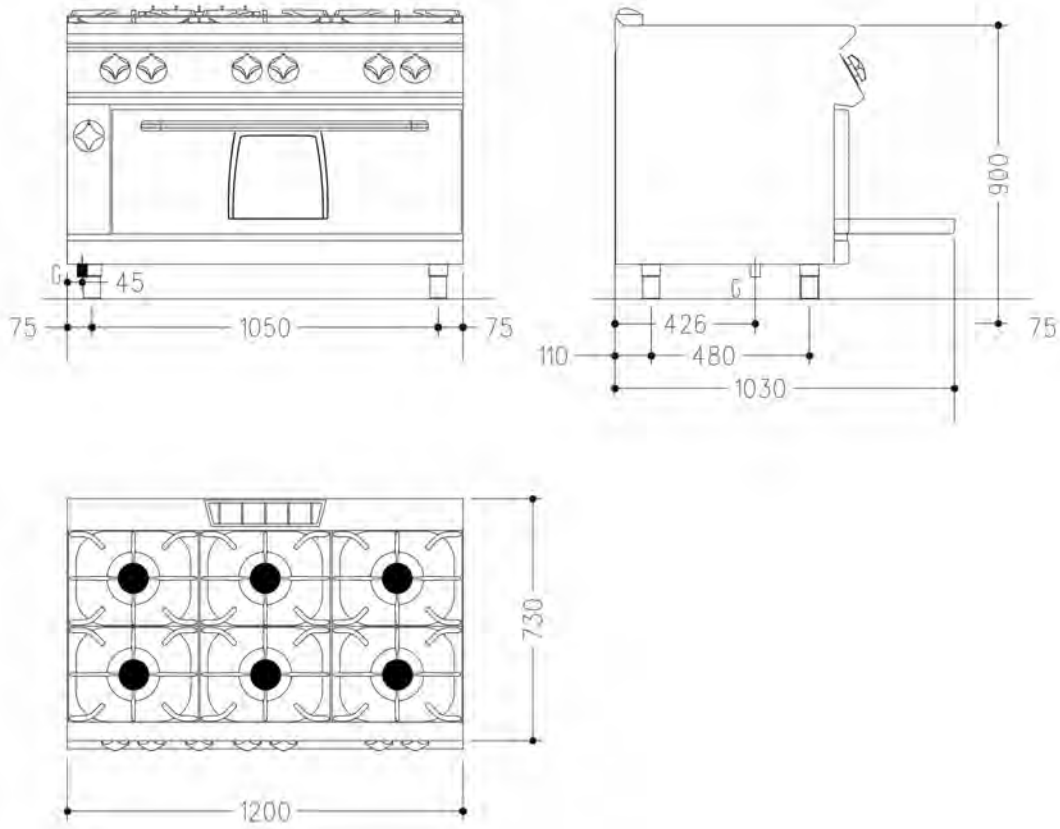
Family
COOKING EQUIPMENT STAR 70

Section
MAXI OVEN

Model
NC7FGM12G

Code
CR0598160

6-BURNER GAS RANGE WITH GAS MAXI OVEN



Legend

(E) Socket 1:

(E) Socket 2:

(G) Gas: Ø1/2"- H=200mm

(AD) Softened water:

(AF) Cold water:

(AC) Hot water:

(S) Draining:

(FR) In e out freon:

(V) Steam: